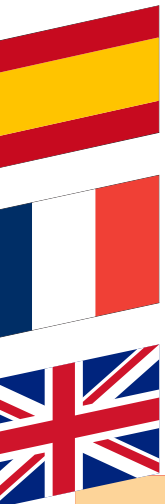




# NAV-900

**CONFIGURACIÓN ANTENA**  
**CONFIGURATION ANTENNE**  
**ANTENNA CONFIGURATION**



2ª Edición - Enero 2023 / 2<sup>ème</sup> édition - Janvier 2023 / 2<sup>nd</sup> edition - January 2023

Ref.: CN-811155

Creado por / Créé par / Created by: MAQUINARIA AGRÍCOLA SOLÀ S.L.

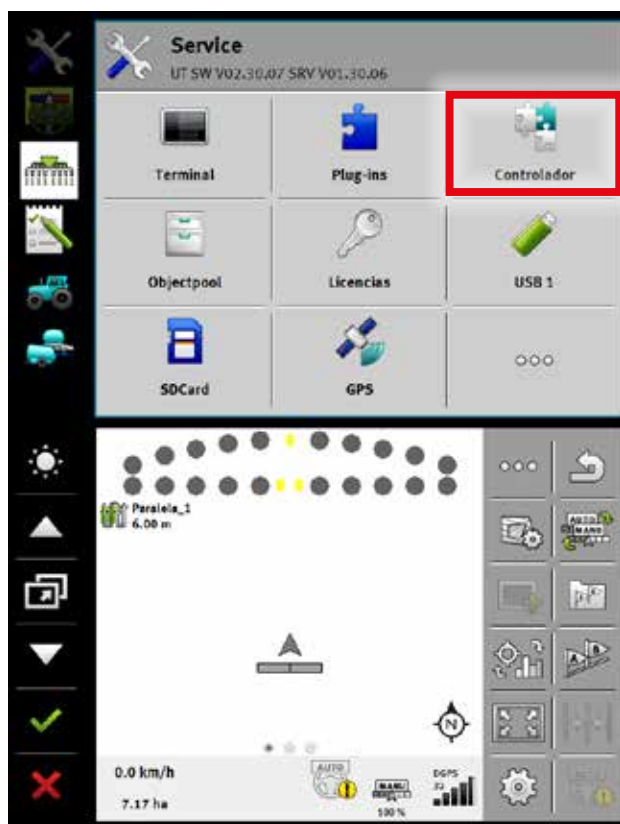
Prohibida la reproducción total o parcial de este manual. / Toute reproduction totale ou partielle de ce manuel est strictement interdite. / It is forbidden to copy any part of this manual.

Especificaciones sujetas a modificaciones sin previo aviso. / Les spécifications techniques peuvent être modifiées sans avertissement préalable. / Specifications are subject to change or modification without notice.

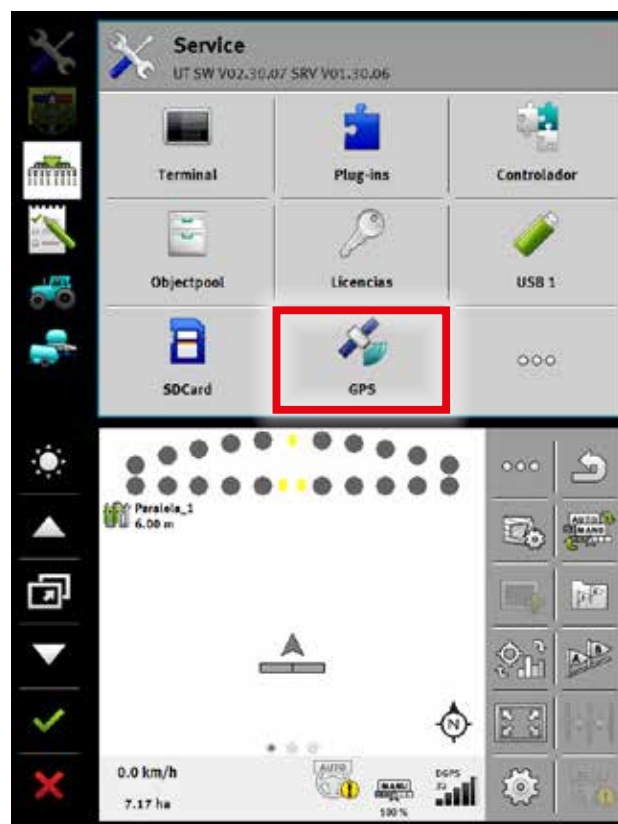
Las fotografías no muestran necesariamente la versión estándar de la máquina. / Les photos sont présentées à titre indicatif et ne correspondent pas nécessairement à la version standard. / The pictures included do not necessary show the standard version.

A continuación se describen los pasos para configurar la antena NAV-900 para monitores TOUCH-800 y TOUCH-1200:  
Voici les étapes pour configurer l'antenne NAV-900 pour les moniteurs TOUCH-800 et TOUCH-1200 :  
Here are the steps to set up the NAV-900 for the TOUCH-800 and TOUCH-1200 monitors:

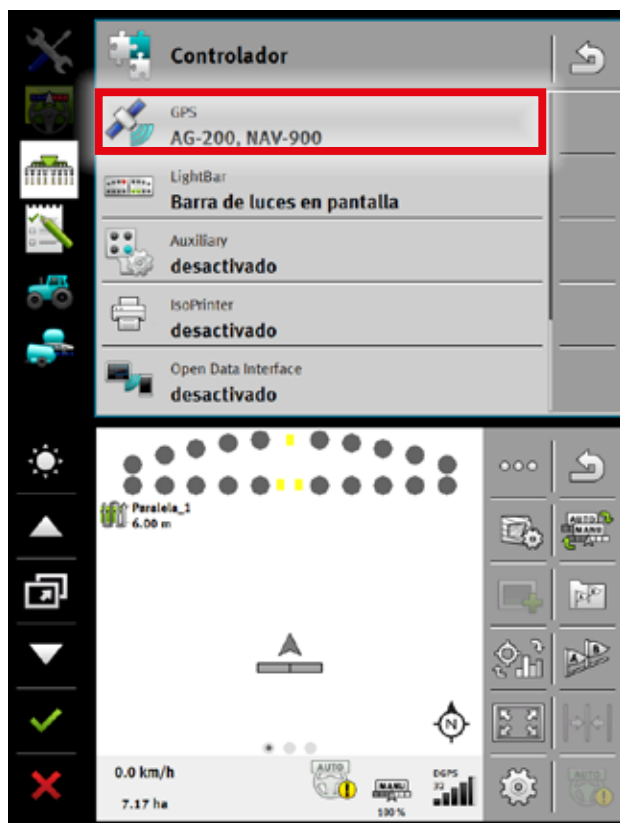
1



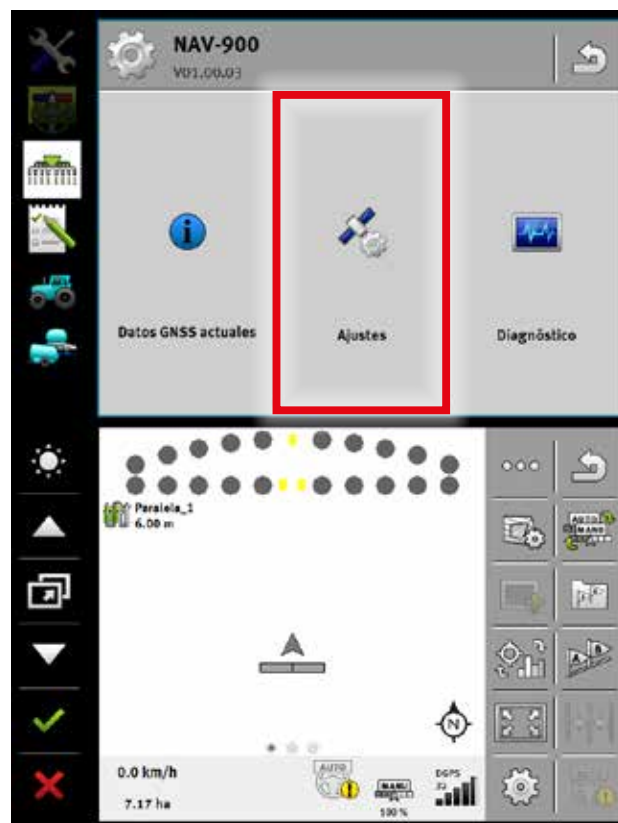
3



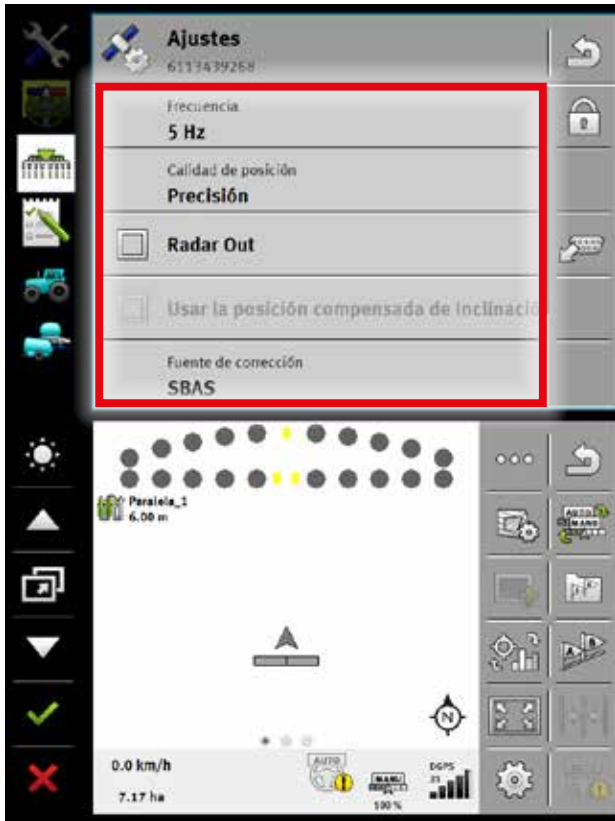
2



4



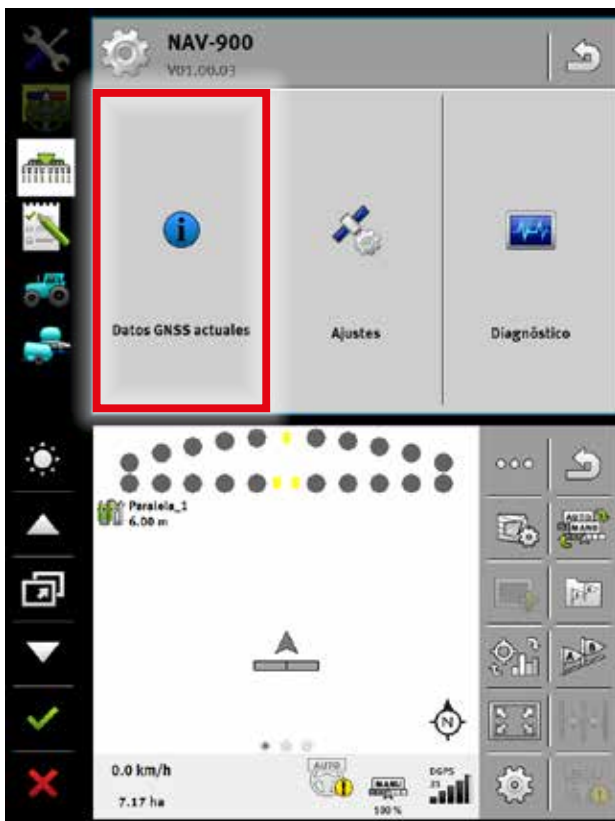
5



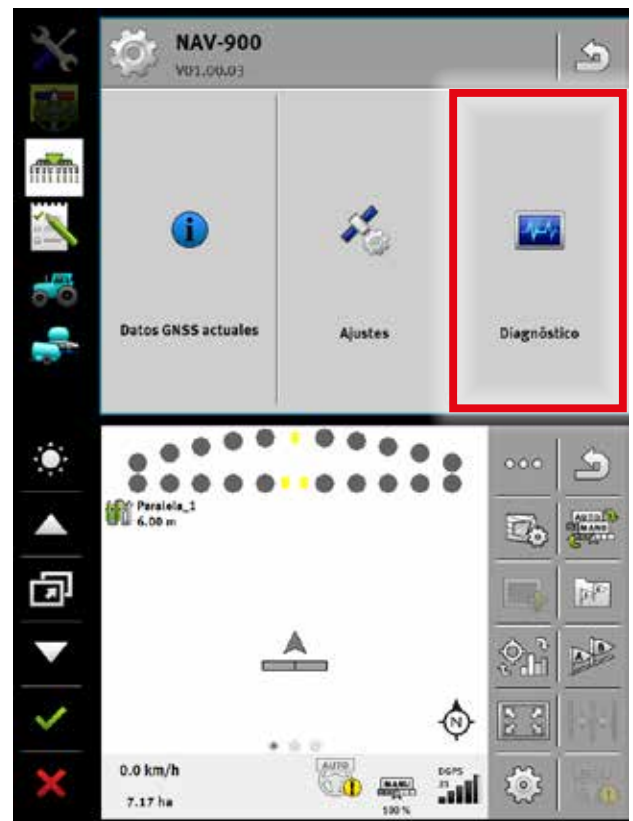
7



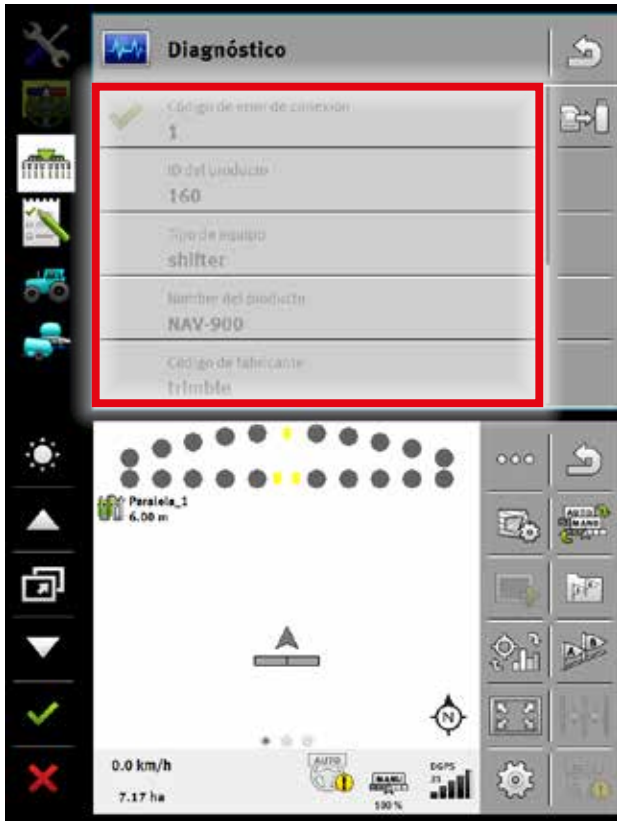
6



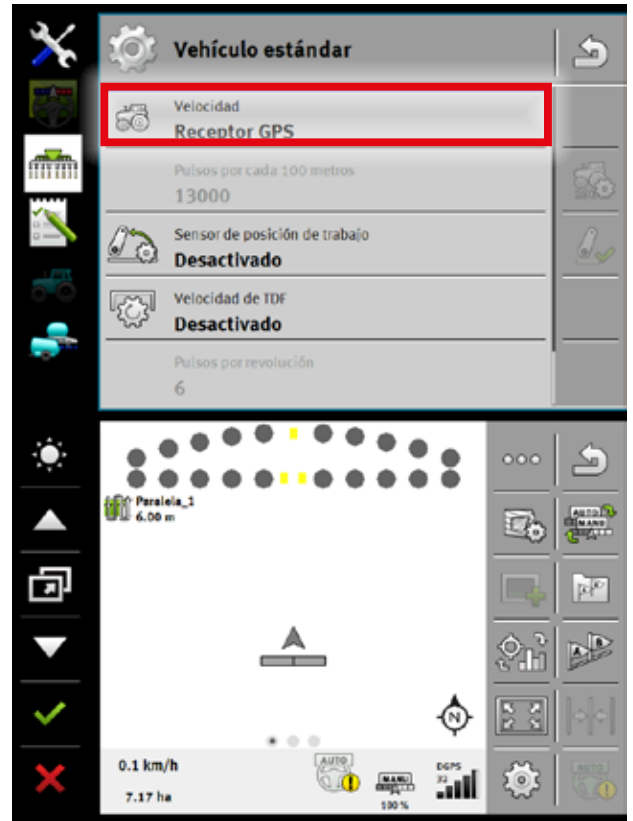
8



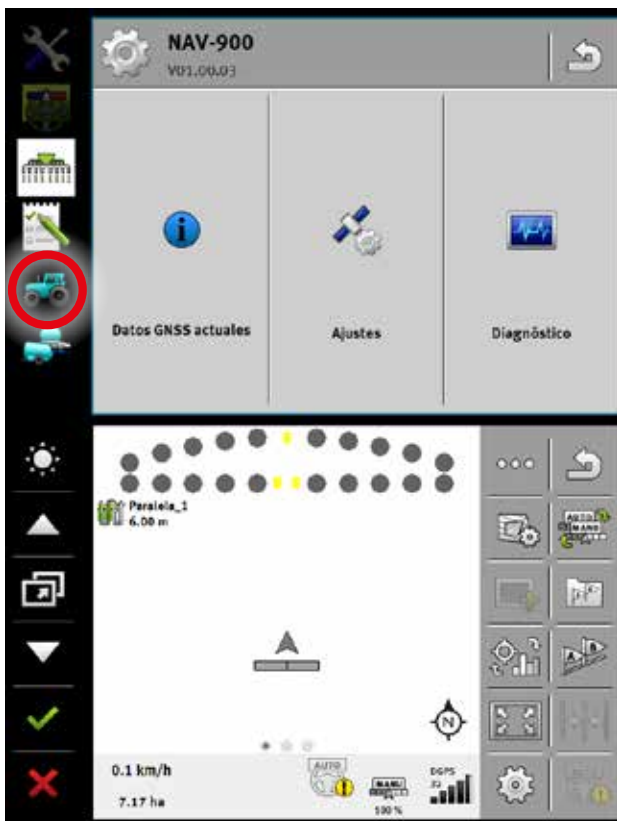
9



11



10



**IMPORTANTE:** UNA VEZ CONECTADA LA ANTENA, REINICIAR EL MONITOR.



**IMPORTANT:** UNE FOIS L'ANTENNE CONNECTÉE, REDÉMARRER LE MONITEUR.



**IMPORTANT:** ONCE THE ANTENNA IS CONNECTED, RESTART THE MONITOR.







**MAQUINARIA AGRÍCOLA SOLÀ, S.L.**

Ctra. de Igualada, s/n. 08280 **CALAF** (Barcelona) España  
Tel. (0034) 93 868 00 60 - Fax (0034) 93 868 00 55

