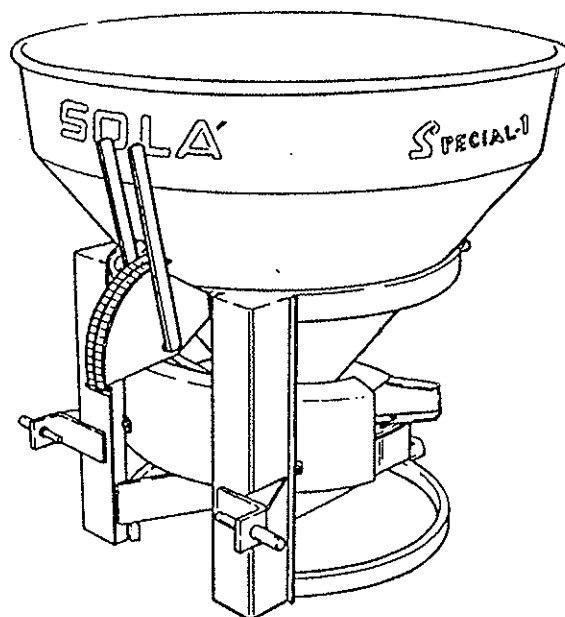


FERTILIZER SPREADERS



TYPE **SPECIAL-1**

INSTRUCTION MANUAL
MAINTENANCE
DOSAGE TABLES
SPARE PARTS

SOLÀ Seed Drills and Fertilizer Spreaders are manufactured in a factory specialised in this area and they are guaranteed for the experience of thousands of users.

They are machines with a high technology planned for a long service, without breakdowns, in very different conditions and with a simple and efficient mechanism to do an excellent work with a minimum of maintenance.

With this information about machines, possibilities and adjustments, we wish to help you to obtain all that you expect of our machines.

Technical Instructions of Security.....	2
1. Technical Specifications.....	5
2. Coupling to the tractor.....	6
3. Transmission.....	6
4. Flow adjustment.....	7
5. Greasing and maintenance.....	8
6. Dosage tables.....	9
7. Spare parts.....	10

TECHNICAL INSTRUCTIONS OF SECURITY

USE IN ACCORD WITH THE DESIGN

The fertilizer spreader SOLA SPECIAL-1, have been produced to the normal applications in agricultural works, specially for the mineral products.

The manufacturer will not assume responsibility for the damages and flaws caused by other applications.

You must respect all the orders related to the security in the machines, traffic, hygiene and security.

The modifications made by the user, annul the possibility of manufacturer guarantee for the possible dammages caused.

GENERAL SECURITY DISPOSITIONS

Before starting the machine, check the security of the machine in the work and concerning the traffic.

To respect the traffic signs in public throughfare.

Before starting, get to know with all the operation and performance elements.

To pay special attention to couple and uncouple the machine in the tractor.

The power point transmission must be protected . To prevent that the protecting tube turns. The protecting tube must be clutch with a chain.

To assemble de power point transmission only with the engine stopped.

Before connecting the power point, verify that anybody is in the dangerous area.

It is strictly forbidden to rest in nearness to the spinning discs during the machine is working.

Fill the fertilizer spreader on the floor, with the engine stopped and the trap-door closed.

To elevate the fertilizer spreader, the front axle of the tractor discharges. Verify that the tractor has enough charge to avoid overturn danger. Check in this situation the direction and braking capacity.

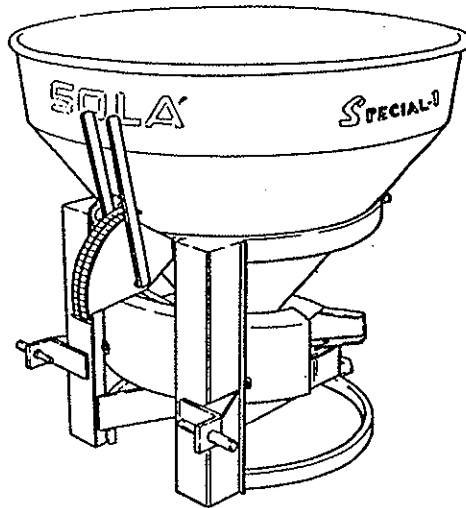
Do not place strange elements in the hopper.

During the transport with the fertilizer spreader raised, block the going down control. Before going down of the tractor, leave the machine on the floor and stop the tractor engine.

In maintenance works with the machine raised, use always, enough support elements to avoid the possible falling of the machine.

Before starting the machine, check the security of the machine in the work and concerning the traffic. Check the visibility around the machine and that there is nobody in the working zone.

TECHNICAL SPECIFICATIONS SPECIAL-1



	TYPE	SP-1/250	SP-1/400
Hopper capacity (litres).....		200	330
Hopper capacity (kgs).....		250	400
Empty weight.....		92	98
Hopper width (cms).....		105	106
Height (cms).....		89	103
Working width (mts).....		25	25

SPECIFICATIONS:

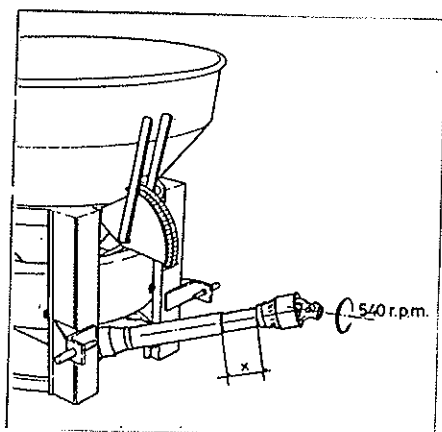
Spinning disc in stainless-steel
 Powder paint for anti-rust treatment
 Double mechanical fertilizer control for opening-closing
 Coupling bolts. Category I and II
 Transmission.

2. TRACTOR COUPLING

The fertilizer spreader SPECIAL-1 can link up to the couplings category I and II.

In working position, the fertilizer spreader has rest in horizontal position and to 75 cm. aprox. from disc to the floor.

3. TRANSMISSION



The power point has to work to 540 rpm and it is very important to keep it constant during the work.

Verify that the end of the telescopic shaft of the power point do not touch when the fertilizer is raised until her position work.

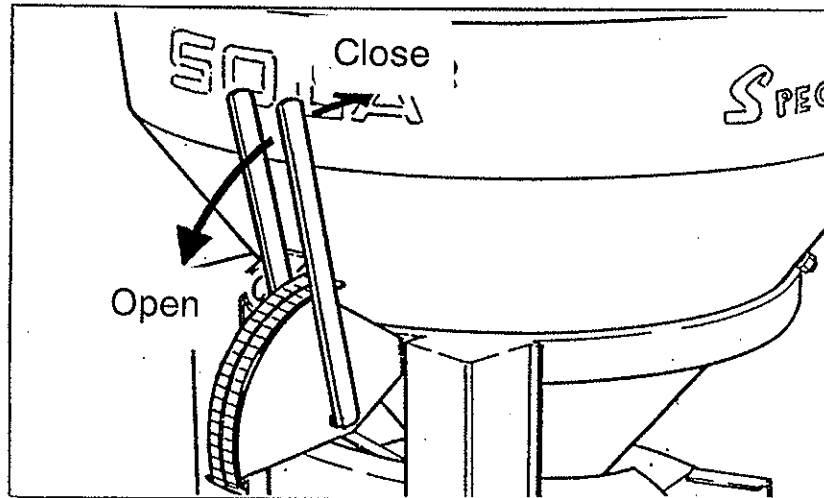
To work always with the transmission protected and in good conditions.

To prevent that the protector tube of the transmission turns. The protector tube must be clutch with a chaine.

To disconnect the power point of the tractor when the machine is placed on the floor, to avoid that the transmission work with and inclined angle too big (maximum 25°)

To engage the tractor power point, we have do it softly. The brusque accelerated can cause dammages in the fertilizer spreader.

4. FLOW ADJUSTMENT



Through two levers it is possible to fertilize the half right or the half left opening the right or left levers.

To fertilize with all the working width, place the two levers downwards, until the position suggested informed in the tables (page 9), according the flow choosed depending of the fertilizer type and tractor speed.

To close the machine, place the levers upwards until number 1 in the graduator.

GREASING AND MAINTENANCE

It is very important grease, every day, the transmission shaft of the power point.

It is necessary to wash the fertilizer spreader with water after working.

It is advisable to protect the machine with oil, diesel oil, etc. if we must park it during a long period of time.

The gear box grease is type NLGI00.

Verify the grease level through the filled top and to refill in the event of wastage.

DOSAGE TABLES

Spinning width 24 m. Powder point to 540 r.p.m.

TIPO DE ARBOL Y PESO ESPECIFICO KG./LITRO	INFOSFATO 48% (1,28)												UREA 48% SUCRATO DE AMONIO NITRATO DE AMONIO												ESCOMIAS GRAN. INDIAS (0,22) CALCIO AZOANO PERL. (0,40) OXIDO DE ANHIDRIDO DE SODIO DE SIAL. (0,20)												SUFATO DE AMONIO (0,81) POTASSIO DE GRAN. Y CRIST. (1,05) ESCOMIAS INDIAS Y POTASSIO EN GRANOS (1,07)											
	6	8	10	12	14	16	18	20	22	24	26	28	6	8	10	12	14	16	18	20	22	24	26	6	8	10	12	14	16	18	20	22	24	26	28	6	8	10	12	14	16	18	20	22	24	26	28	
1	45	34	27	23	19	14	11	10	10	10	10	18	14	12	12	12	12	12	12	12	12	12	18	14	12	12	12	12	12	12	12	12	12	12	18	14	12	12	12	12	12	12	12	12	12	12		
2	100	75	60	50	43	34	27	23	23	23	23	40	32	27	23	23	23	23	23	23	23	23	40	32	27	23	23	23	23	23	23	23	23	23	40	32	27	23	23	23	23	23	23	23	23	23		
3	120	90	72	60	51	41	34	28	23	23	23	48	38	32	27	23	23	23	23	23	23	23	48	38	32	27	23	23	23	23	23	23	23	23	48	38	32	27	23	23	23	23	23	23	23	23		
4	160	120	96	80	68	56	46	38	32	27	23	64	51	43	36	30	26	23	23	23	23	23	64	51	43	36	30	26	23	23	23	23	23	23	64	51	43	36	30	26	23	23	23	23	23	23		
5	200	150	120	100	88	76	64	54	46	38	32	80	64	54	46	38	32	27	23	23	23	23	80	64	54	46	38	32	27	23	23	23	23	23	80	64	54	46	38	32	27	23	23	23	23	23		
6	250	188	150	125	107	93	78	66	56	46	38	100	81	67	56	46	38	32	27	23	23	23	100	81	67	56	46	38	32	27	23	23	23	23	100	81	67	56	46	38	32	27	23	23	23	23		
7	310	225	180	150	129	112	95	81	69	58	48	120	97	81	69	58	48	40	34	29	25	23	120	97	81	69	58	48	40	34	29	25	23	23	120	97	81	69	58	48	40	34	29	25	23	23		
8	350	262	210	175	150	130	111	94	81	69	58	140	113	94	81	69	58	48	40	34	29	25	140	113	94	81	69	58	48	40	34	29	25	23	140	113	94	81	69	58	48	40	34	29	25	23		
9	400	300	240	200	172	148	126	108	92	77	64	160	126	108	92	77	64	54	46	38	32	27	160	126	108	92	77	64	54	46	38	32	27	23	160	126	108	92	77	64	54	46	38	32	27	23		
10	450	337	270	225	193	163	142	121	104	88	74	180	142	121	104	88	74	64	54	46	38	32	180	142	121	104	88	74	64	54	46	38	32	27	180	142	121	104	88	74	64	54	46	38	32	27		
11	500	375	300	250	215	180	155	135	116	98	83	200	155	135	116	98	83	74	64	54	46	38	200	155	135	116	98	83	74	64	54	46	38	32	200	155	135	116	98	83	74	64	54	46	38	32		
12	550	412	330	275	236	197	168	148	127	108	92	220	168	148	127	108	92	83	74	64	54	46	220	168	148	127	108	92	83	74	64	54	46	38	220	168	148	127	108	92	83	74	64	54	46	38		
13	600	450	360	300	258	216	184	162	139	118	100	240	184	162	139	118	100	92	83	74	64	54	240	184	162	139	118	100	92	83	74	64	54	46	240	184	162	139	118	100	92	83	74	64	54	46		
14	650	487	390	325	279	231	195	175	150	126	108	260	195	175	150	126	108	100	92	83	74	64	260	195	175	150	126	108	100	92	83	74	64	54	260	195	175	150	126	108	100	92	83	74	64	54		
15	700	525	420	350	301	251	210	188	162	139	118	280	210	188	162	139	118	110	100	92	83	74	280	210	188	162	139	118	110	100	92	83	74	64	280	210	188	162	139	118	110	100	92	83	74	64		
16	750	562	450	375	322	269	224	202	174	148	126	300	224	202	174	148	126	120	110	100	92	83	300	224	202	174	148	126	120	110	100	92	83	74	300	224	202	174	148	126	120	110	100	92	83	74		
17	800	600	480	400	344	288	243	218	185	156	134	320	243	218	185	156	134	130	120	110	100	92	320	243	218	185	156	134	130	120	110	100	92	83	320	243	218	185	156	134	130	120	110	100	92	83		
18	850	645	516	430	369	308	258	232	199	166	142	340	258	232	199	166	142	140	130	120	110	100	340	258	232	199	166	142	140	130	120	110	100	92	340	258	232	199	166	142	140	130	120	110	100	92		
19	910	682	548	455	391	326	271	245	211	176	150	360	271	245	211	176	150	150	140	130	120	110	360	271	245	211	176	150	150	140	130	120	110	100	360	271	245	211	176	150	150	140	130	120	110	100		
20	980	725	588	490	421	353	296	247	216	179	154	380	296	266	227	188	160	160	150	140	130	120	380	296	266	227	188	160	160	150	140	130	120	110	380	296	266	227	188	160	160	150	140	130	120	110		

The information is for guidance only and it refers to kg/Ha.

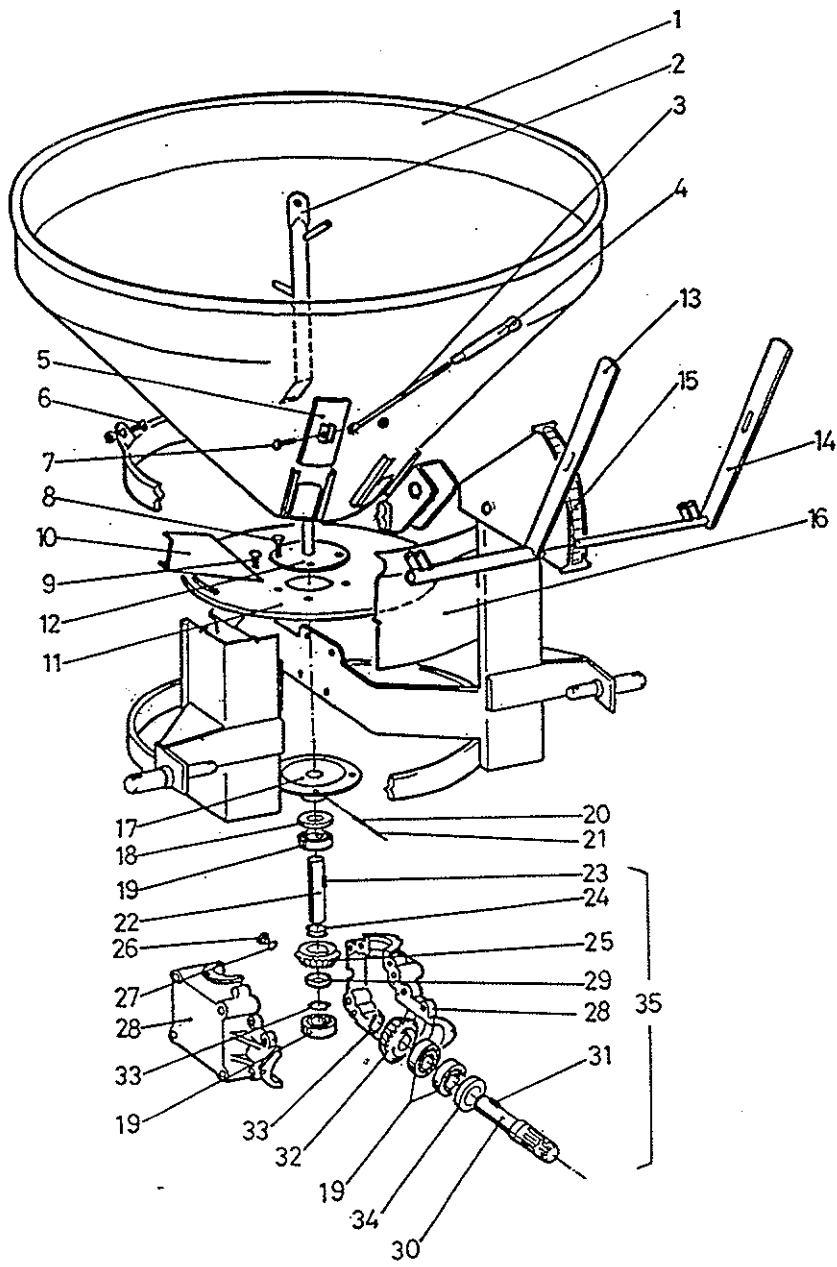


Figure	Code	
1	20106	
1	20107	
2	20085	
3	20095	
4	20094	
5	20103	
6	50222	
7	50208	
8	50128	
9	50102	
10	20086	
11	20025	
12	20084	
13	20092	
14	20091	
15	20044	
16	20108	
17	20109	
18	50408	
19	50458	
20	50655	
21	50656	
22	20066	
23	50730	
24	20067	
25	20074	
26	50816	
27	50817	
28	20061	
29	20068	
30	20060	
31	50731	
32	20064	
33	50708	
34	50409	
35	20110	